

# IS 15 - 25 - 35 IDRA

hydraulic sausage stuffers



IS 15 IDRA



IS 25 IDRA



IS 35 IDRA



- Complete stainless steel construction to withstand heavy-duty application
- Easily removed lid, cylinder and piston for thorough cleaning and sanitation to ensure the highest levels of hygiene and safety
- IP 67 waterproof & dustproof protection switch, flow dial regulator
- Side-mounted foot switch for convenience of operation
- Automatic piston decompression and shut-off
- 3 nozzles - 3/8", 3/4", 1" - as standard

## Features

### Technical

- The machine is completely made of stainless steel for durable long life.
- Silicone gaskets act inside the cylinder for better seal and longer life of the gasket.
- Side mounted foot switch for more comfortable operation.
- Three stuffing nozzles included (3/8", 3/4", 1").

### Safety

- Overcurrent and no volt release protection

### Sanitary

- The machine can be completely disassembled for an easy and accurate cleaning.

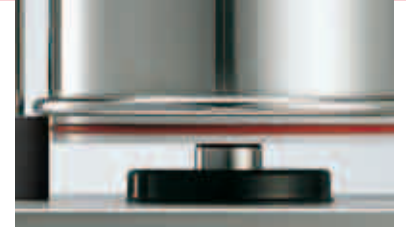
### Options

- Stainless steel nozzle lock ring
- Set of 4 stainless steel nozzles (Ø 1/2" - Ø 5/8" - Ø 13/16" - Ø 1 1/2")

## Specifications

- Motor:** 3/4 Hp (520 W), fan cooled.
- Electrical IS 15:** 220V AC, 60Hz, 1-phase (3-phase available on request).
- Electrical IS 25-35:** 220V AC, 60Hz, 3-phase (1-phase available on request).
- Plug and Cord IS 15:** Attached, flexible, 3 wire (3PH+1G) SJT 12 AWG, 6'4" long cord.
- Plug and Cord IS 25-35:** Attached, flexible, 4 wire (3PH+1G) SJT 18 AWG, 6'4" long cord.
- Switch:** IP 67 controls with stainless steel on/off buttons.

Easy and fast breakdown for cleaning



Piston gasket



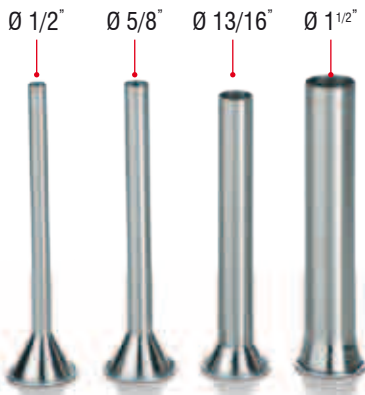
Easy access to inspect oil level and perform service



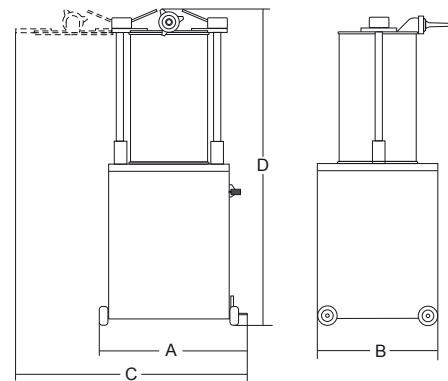
Side mounted foot switch



Optional stainless steel nozzle lock ring



Optional: stainless steel nozzles



	Power	Cylinder capacity	Cylinder length	Cylinder diameter	Piston stroke	Min. forward speed	Max. forward speed	Backward speed	Ø Serie exhaust funnels	A	B	C	D	Net weight	Shipping	Gross weight
	Watt/Hp	lbs.	inch.	Ø inch.	inch.				Ø inch.	inch.	inch.	inch.	inch.	lbs.	inch.	lbs.
<b>IS 15 Idra</b>	520/0,7	32	19 <sup>1</sup> / <sub>2</sub> "	7 <sup>7</sup> / <sub>8</sub> "	16 <sup>15</sup> / <sub>16</sub> "	2' 11"	59"	35"	3/8" - 3/4" - 1"	19 <sup>9</sup> / <sub>16</sub> "	14 <sup>5</sup> / <sub>8</sub> "	27 <sup>9</sup> / <sub>16</sub> "	47 <sup>1</sup> / <sub>4</sub> "	117	28 <sup>3</sup> / <sub>8</sub> " x 22 <sup>7</sup> / <sub>16</sub> " x 54 <sup>5</sup> / <sub>16</sub> "	139
<b>IS 25 Idra</b>	520/0,7	55	18 <sup>1</sup> / <sub>8</sub> "	10 <sup>1</sup> / <sub>4</sub> "	14 <sup>15</sup> / <sub>16</sub> "	2' 02"	51"	32"	3/8" - 3/4" - 1"	22 <sup>1</sup> / <sub>4</sub> "	17 <sup>1</sup> / <sub>16</sub> "	37 <sup>3</sup> / <sub>8</sub> "	45 <sup>1</sup> / <sub>16</sub> "	200	28 <sup>3</sup> / <sub>8</sub> " x 22 <sup>7</sup> / <sub>16</sub> " x 54 <sup>5</sup> / <sub>16</sub> "	227
<b>IS 35 Idra</b>	520/0,7	75	18 <sup>1</sup> / <sub>8</sub> "	12 <sup>5</sup> / <sub>8</sub> "	14 <sup>15</sup> / <sub>16</sub> "	2' 02"	51"	32"	3/8" - 3/4" - 1"	25 <sup>3</sup> / <sub>16</sub> "	18 <sup>7</sup> / <sub>8</sub> "	39 <sup>3</sup> / <sub>8</sub> "	45 <sup>1</sup> / <sub>16</sub> "	222	29 <sup>15</sup> / <sub>16</sub> " x 25 <sup>3</sup> / <sub>16</sub> " x 56 <sup>5</sup> / <sub>16</sub> "	249